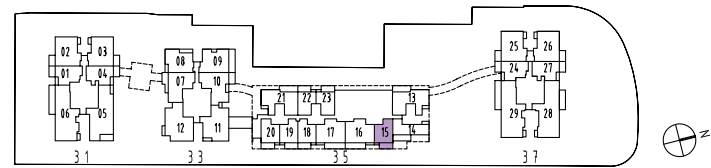
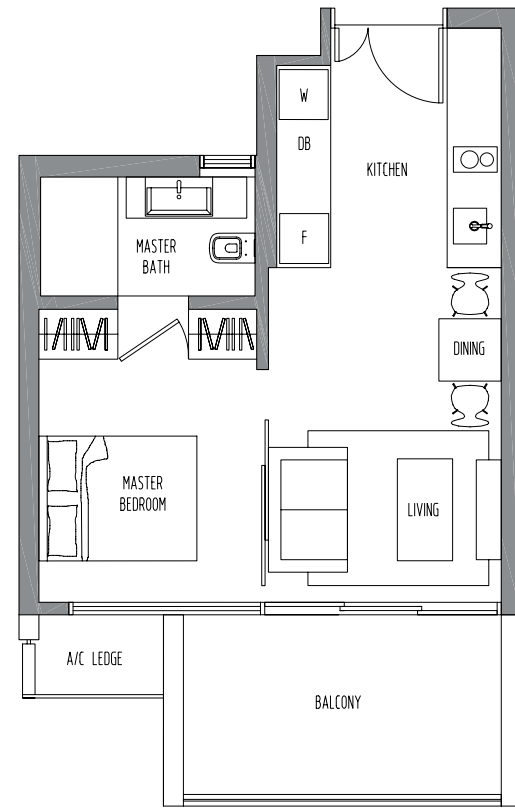


Type LAI

Area 506 sq ft
Block 35
02-15, 03-15, 04-15

Type LAIc

Area 506 sq ft
High ceiling unit
Block 35
05-15

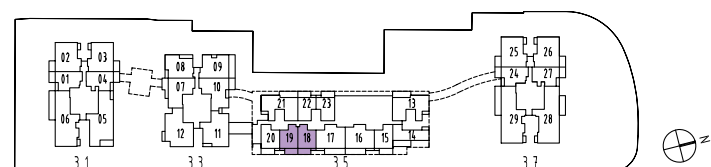


Type LAIa

Area 506 sq ft
Block 35
02-18, 03-18, 04-18,
02-19, 03-19, 04-19

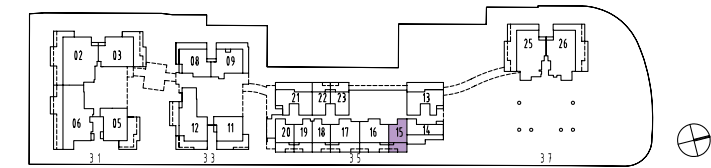
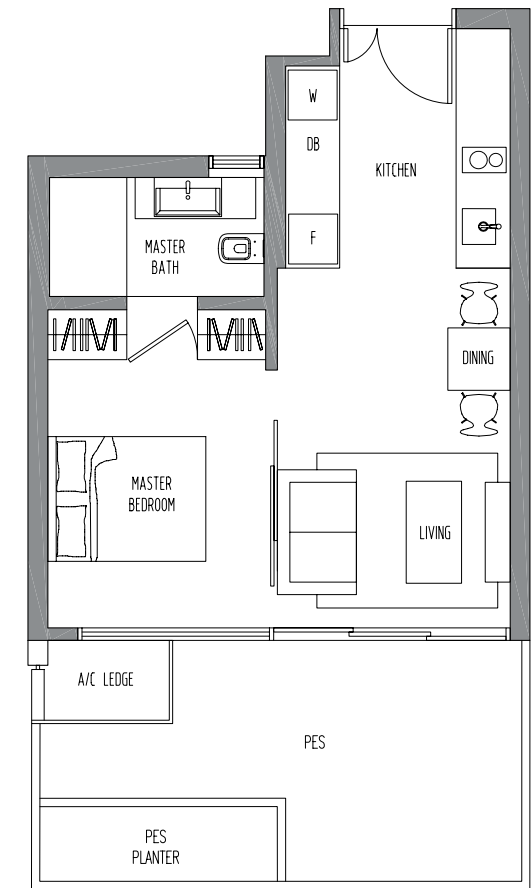
Type LAIb

Area 506 sq ft
High ceiling unit
Block 35
05-18,
05-19



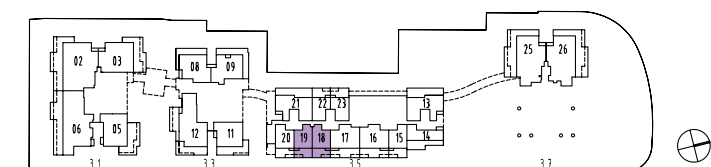
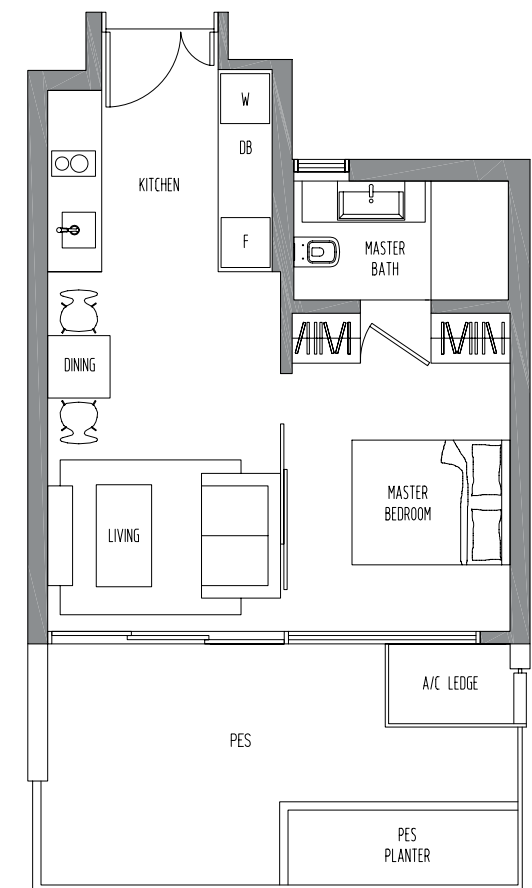
Type LAIG

Area 603 sq ft
High ceiling unit
Block 35
01-15



Type LAIGa

Area 593 sq ft
High ceiling unit
Block 35
01-18,
01-19

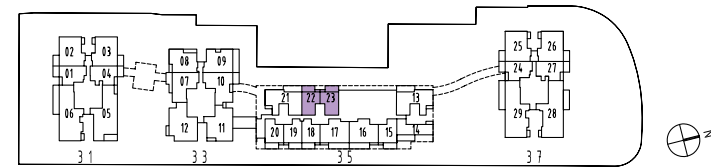
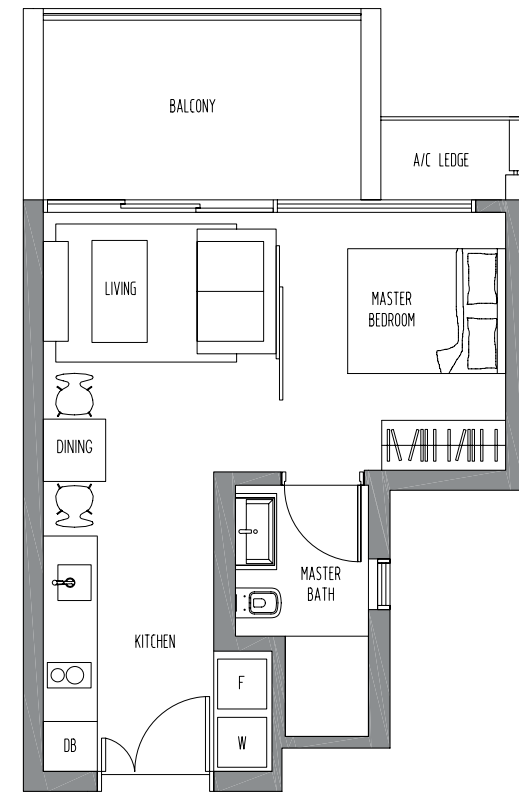


Type LA2

Area 485 sq ft
 Block 35
 02-22, 03-22, 04-22,
 02-23, 03-23, 04-23

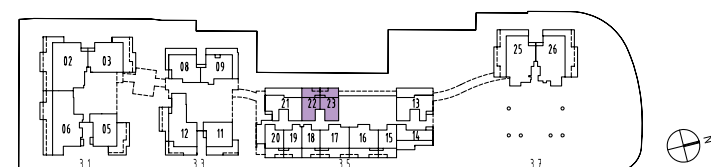
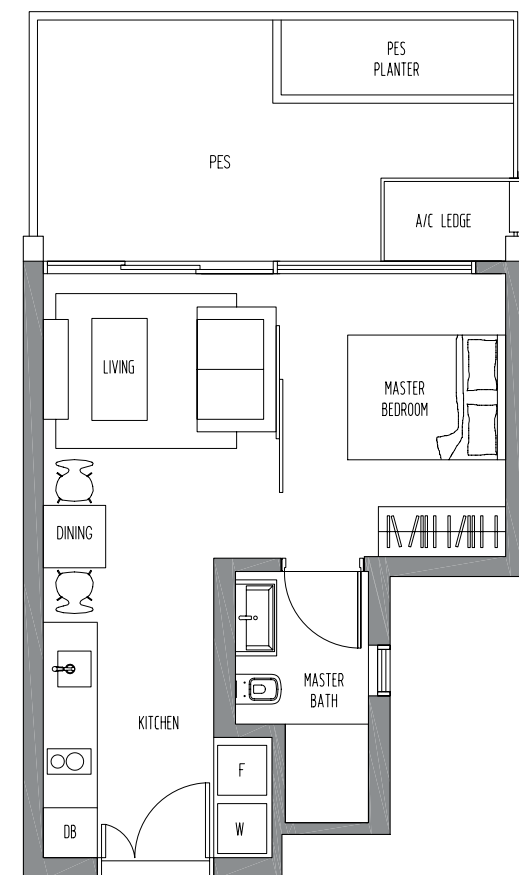
Type LA2a

Area 485 sq ft
 High ceiling unit
 Block 35
 05-22,
 05-23



Type LA2G

Area 571 sq ft
 High ceiling unit
 Block 35
 01-22,
 01-23

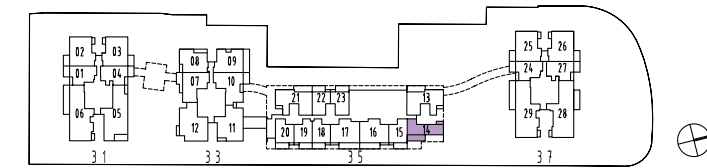
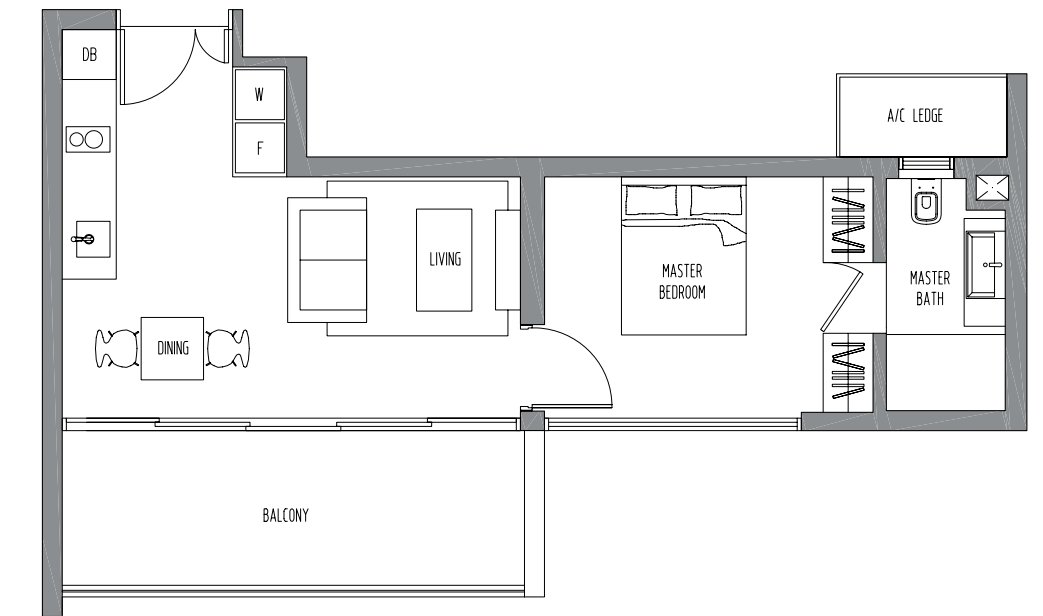


Type LA3

Area 593 sq ft
 Block 35
 02-14, 03-14, 04-14

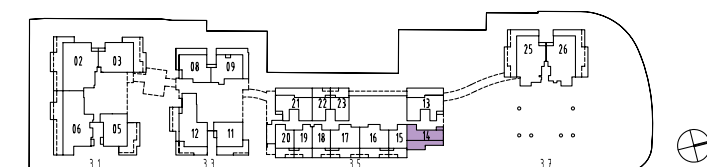
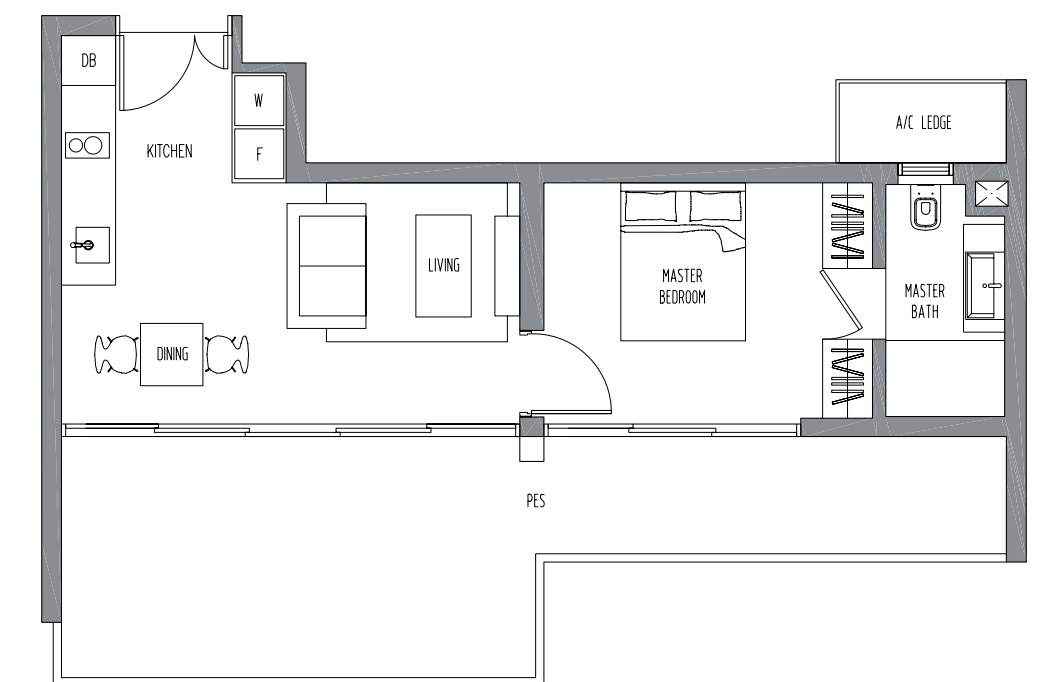
Type LA3a

Area 593 sq ft
 High ceiling unit
 Block 35
 05-14



Type LA3G

Area 754 sq ft
 High ceiling unit
 Block 35
 01-14

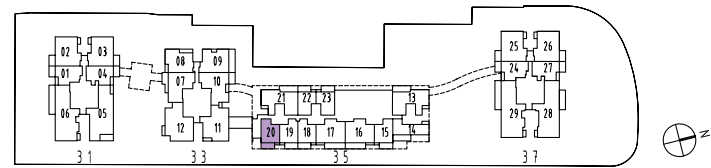
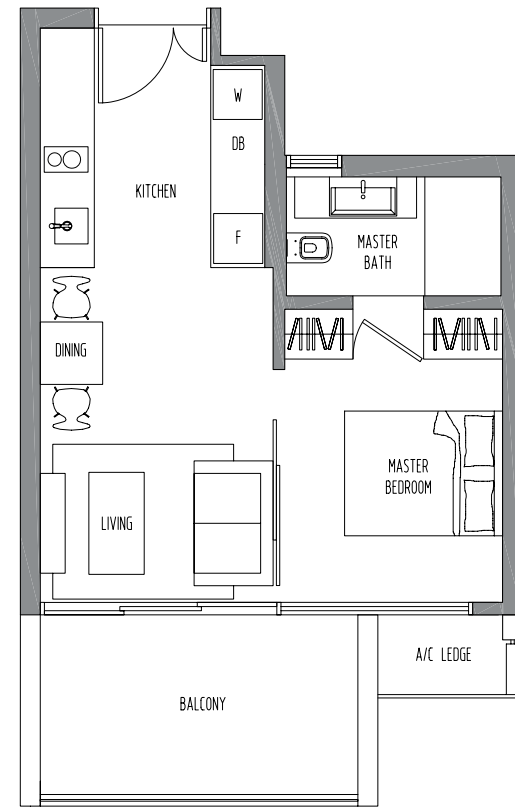


Type LA4

Area 506 sq ft
Block 35
02-20, 03-20, 04-20

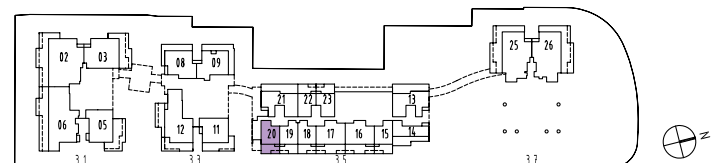
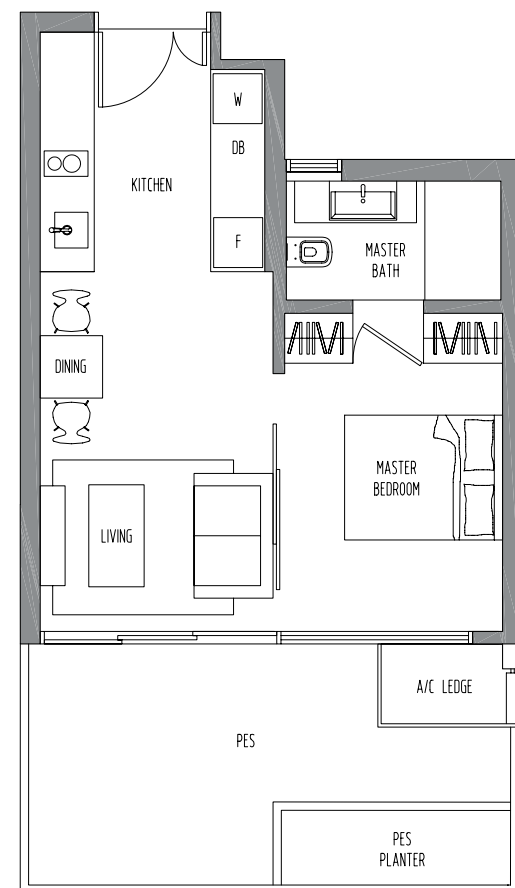
Type LA4a

Area 506 sq ft
High ceiling unit
Block 35
05-20



Type LA4G

Area 603 sq ft
High ceiling unit
Block 35
01-20



Type A1

Area 571 sq ft
Roof terrace at 15th level

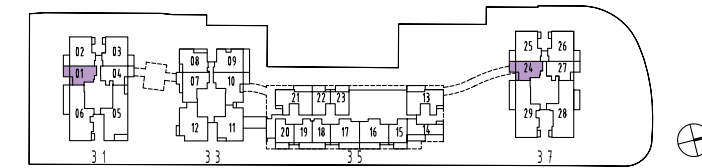
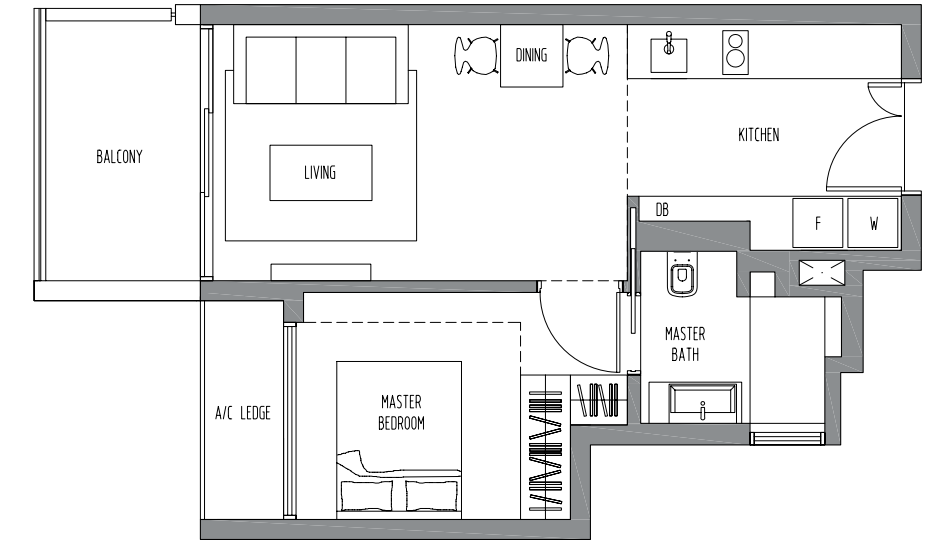
Block 31
02-01, 03-01, 04-01, 05-01, 06-01,
07-01, 08-01, 09-01, 10-01, 11-01,
12-01, 13-01, 14-01, 15-01

Block 37
02-24, 03-24, 04-24, 08-24, 09-24,
10-24, 11-24, 12-24, 13-24, 14-24,
15-24

Type A3

Area 872 sq ft
Dotted line denotes double height
ceiling demarcation

Block 37
05-24



Type A2

Area 582 sq ft

Block 31
02-04, 03-04, 04-04, 08-04, 09-04,
10-04, 11-04, 12-04, 13-04, 14-04,
15-04

Block 37
02-27, 03-27, 04-27, 05-27, 06-27,
07-27, 08-27, 09-27, 10-27, 11-27,
12-27, 13-27, 14-27, 15-27

Type A4

Area 915 sq ft
Dotted line denotes double height
ceiling demarcation

Block 31
05-04

